



wirraglen  
*highfields*

*welcome home*

*superbly positioned,  
designed to be enjoyed*



## wirraglen *highfields*

Welcome to Wirraglen, a boutique masterplanned community where lifestyle and amenity are balanced by thoughtfully designed, open space landscape.

Located at the juncture of tree lined Wirraglen Road and sweeping Kleinton Road, Wirraglen offers exceptional living just minutes from the Highfields town centre.

With an embellished, naturally occurring green corridor at its heart, the initial precinct of 147 premium homesites, offers residents connectivity via an extensive network of walking paths and cycleways. Everyday shopping convenience is within easy reach, and your family's education, community and sporting centres are close at hand.

Whether you're catching up with family and friends in the parklands, relaxing at home, or exploring the nearby natural walking trails, an accessible and active lifestyle is yours to enjoy at Wirraglen.



*naturally inspired,  
exceptionally designed*

Toowoomba City

University of  
Southern Queensland

Toowoomba  
Wellcamp Airport

Highfields Sports  
& Recreation Park

Highfields State  
Secondary College

Highfields  
Town Centre



wirraglen  
highfields

## Location

Wirraglen is a picturesque 36 hectare property, located in northern Highfields. Travel to Toowoomba City centre in less than 15 minutes via the New England Highway, or connect to the world via the Toowoomba Wellcamp Airport facility in under half an hour.

Over the ensuing years, the estate has the potential to become home to more than 1000 residents. Featuring carefully considered open spaces, mature-tree lined streets and activity trails, this is a place you will want to come home to.

At its heart, Wirraglen is a community where your neighbours become friends, where you come together in open spaces and where your family feels at home.

*great things don't  
happen by accident*

## Masterplan

The Wirraglen masterplan has been crafted to create a beautiful setting for your new home through inspired urban design, superior landscaping, parks and open spaces.

This estate has been carefully conceived around a natural swathe of mature trees, sympathetically embellished to create interactive play and relaxation spaces for residents to come together.

Designed to encourage a fun and active lifestyle, generous footpaths and cycleways connect residents to all amenity. Whether you're a first home buyer, a growing family, or looking to downsize, you'll find land that's perfect for you at Wirraglen.

### Estate Features

No. of Lots: 147

Lot Range: Between 600m<sup>2</sup>  
to 1200m<sup>2</sup>

Ave Lot Size: 740m<sup>2</sup>

Parkland Area:  
More than 3.5 acres

Cycleways and Pathways:  
More than 3.5km



**wirraglen**  
*highfields*



wirraglen  
highfields

ultimate location,  
connected living

A rare opportunity for an aspirational lifestyle awaits you at Wirraglen. Perfectly positioned in the heart of Highfields, living at Wirraglen means everything you need is close to home.

### Discover

You don't have to go too far to immerse yourself in natural bushland. Just a short walk from home and you will discover the beautiful wildlife corridor of Klein Creek. Equally proximate is the Charles & Motee Rogers Bushland Reserve.

### Learn

Highfields is an area blessed with an array of quality educational facilities, including Highfields State Secondary College, which is on Wirraglen's doorstep. Our unique location is only three kilometres from the state primary school and less than two kilometres from Mary Mackillop Catholic College, meaning the journey to and from school is never far.

### Shop

An established local village is waiting for you. Highfields Village Shopping Centre and Highfields Plaza encompassing major supermarkets and specialty stores, are both just a short three minute drive from home.

### Play

Highfields Sport & Recreation Park, a high quality multi sports facility, and Kuhls Road Sports Centre are close by. Highfields Fitness and Recreation Centre, including swimming pool, gym and indoor courts, is also within easy walking distance.

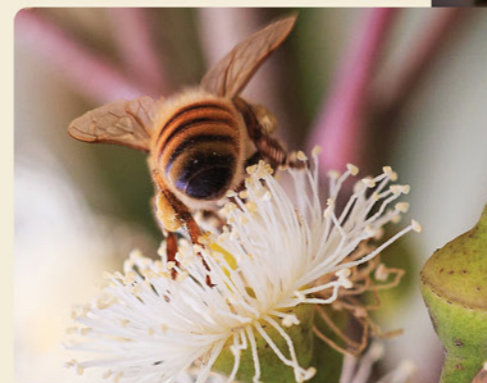
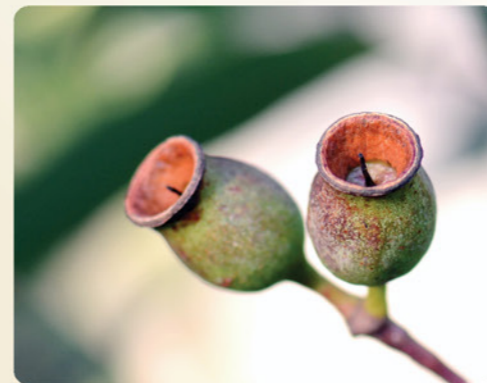
Poised to become home to a new purpose-built library and community meeting facility, the Highfields Cultural Precinct boasts a popular wedding, conference and events centre. Living at Wirraglen means you are never far from the action.

### Care

Medical Centres and allied health services are located at both major shopping centres so you can rest assured.

### Dine

Whether you're looking for a great place to catch up with friends or looking to feed the family, Highfields offers a range of dining options, all within easy reach from Wirraglen.





wirraglen  
*highfields*

*welcome home*

Land release and pricing  
expected late 2022.

Register your interest today at  
**wirraglen.com.au**

Enquiries 0455 512 666  
welcome@wirraglen.com.au

Please note that the material contained herein has been produced prior to detailed design and construction, is indicative only and does not constitute a representation by the Vendor, Agent, or Vendor's consultant in respect to the size, form, dimensions, specifications or layout of the final product. The final product may change from that illustrated herein. Artists impressions, masterplans and the project specification may depict and detail features which may not be included in the final development. Changes may be made to the detail layouts during development and construction in accordance with building and or planning requirements or for compliance with relevant standards or codes. Prospective purchasers must make and rely upon their own enquiries.

ANOTHER QUALITY  
DEVELOPMENT BY



HALLMARK  
PROPERTY